

# Attenuators

## 4-8 GHz

# CALIBRATED VARIABLE ATTENUATORS

- Flat Frequency Response
- Accurate Calibration
- Direct Reading 0 to 20 dB and 0 to 40 dB



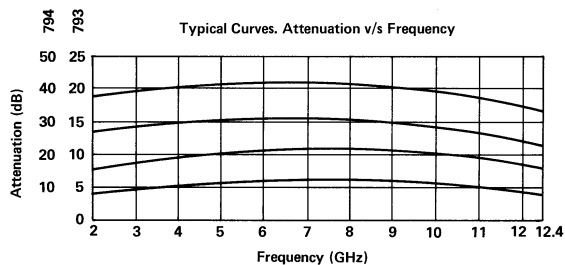
## SPECIFICATIONS

FREQUENCY RANGE (GHz)	ATTENUATION (dB)	POWER INPUT		VSWR (Max) 4-8	INSERTION LOSS (Max dB)	ACCURACY (dB)	WEIGHT (Max)	
		AVG. (W) Max	PEAK (kW) Max				Oz	Kg
4-8	0-20	10	5	1.25	1.0	±1.0	43.2	1.23
	0-40	10	5	1.25	1.5	±1.5	84.6	2.40

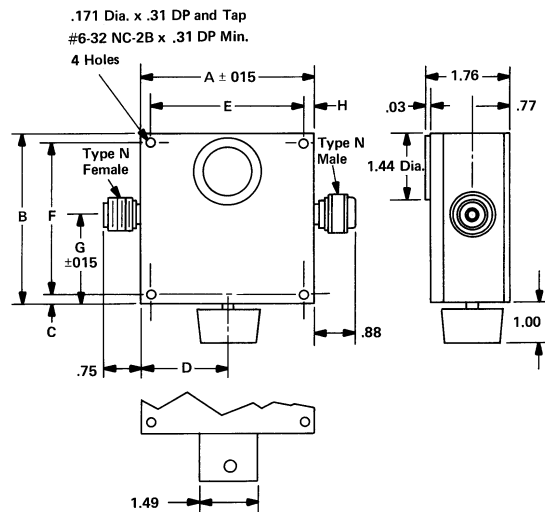
Connectors are Type N stainless steel

**ORDERING INFORMATION:** Specify model number and add dash number suffix for attenuation in dB.  
For example: 793-10

## OUTLINE DRAWINGS



Model No.	A	B	C	D	E ±.015	F ±.015	G	H
793	4.83	4.29	.16	2.42	4.500	3.968	2.23	.16
794	8.51	5.24	.16	4.26	6.937	4.937	2.71	.79



All dimensions are Max. unless otherwise specified.